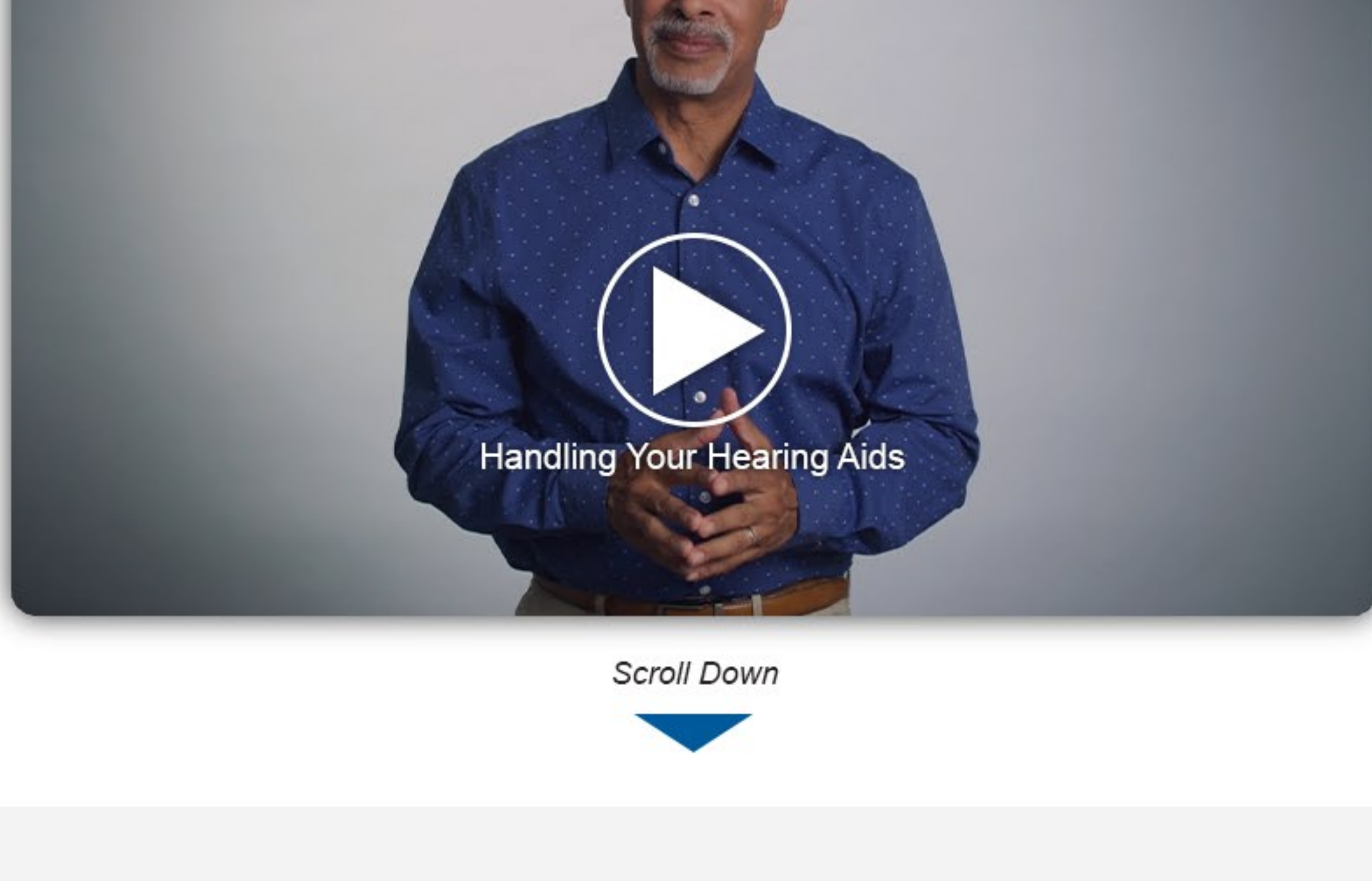


Get off to a Great Start

Learning Session 2

Watch the video to get started



Scroll Down

Getting to Know Your Hearing Aids

In this learning session, you'll find:

- How to Identify the Components of Your Hearing Aids
- How to Adjust the Volume
- What Programs Are Available and How to Change From One to Another
- Telling the Left and Right Hearing Aids Apart
- How to Recharge Your Hearing Aids
- 3 Tips to Ensure You Never Run Out of Battery Power

Estimated time for this session: 8–10 min.

Step 1 of 7

Your Hearing Aid Model

Beltone Imagine 63 RIE

- 63 is your model number
- Your hearing aid uses rechargeable batteries
- RIE stands for receiver-in-ear, which refers to the speaker that produces the sound that is in the ear canal



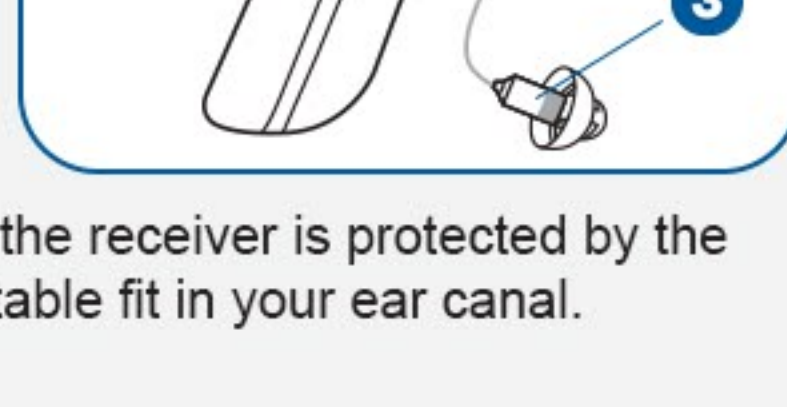
Move on to Step 2

Step 2 of 7

Hearing Aid Components

There are three main components to your Beltone Imagine 63 RIE

- 1 The Push Button**
Use to change volume, select programs and activate streaming to accessories.
- 2 Microphones (2)**
Located at the top of hearing aid body, each microphone picks up sounds from either behind or in front of you.
- 3 Receiver**
The speaker that produces the sound you hear, the receiver is protected by the rubber dome, which also helps secure a comfortable fit in your ear canal.



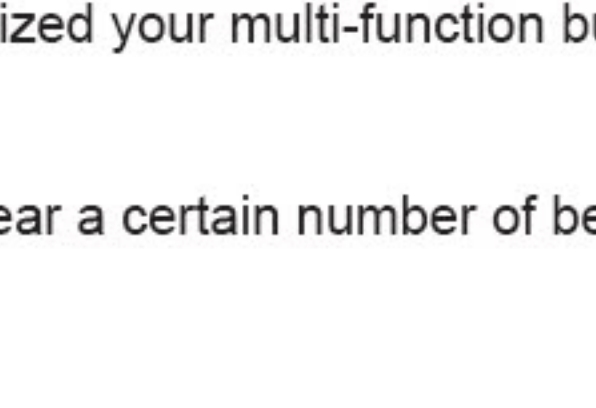
Move on to Step 3

Step 3 of 7

Using the Push Button

Turn On and Off

Press and hold for 5 seconds.



Switch Programs

Please note, your hearing care professional may have customized your multi-function button specifically to you so the instructions below may not apply.

Generally, you can switch programs with a short click. You'll hear a certain number of beeps indicating which program you have selected.

Example: 1 beep indicated program 1, 2 indicates program 2, etc.

Activate Streaming

Upon activating streaming, you'll hear a short melody, after which you can stream sound from a TV streamer, extra microphone or other accessory.

Move on to Step 4

Step 4 of 7

Changing Volume and Programs

The functions listed below are the default settings for the multi-function button.

Please Note: If your hearing care professional has customized your multi-function button specifically to you, the instructions below might not apply to you.

Adjust Volume

- A short click up or down will increase or decrease the volume.
- You will hear a single beep with each click.

Switching Programs

What Are Programs?

Programs are simply settings on your hearing aids that optimize your hearing experience in specific situation like dining out or taking a walk outdoors.

- Press and hold up for 1 second to switch to the next program.
- You will hear a certain number of beeps indicating the program you have selected.
Example: 1 beep indicates program 1, 2 beeps indicates program 2, etc.

Activate Streaming

- Press and hold down for 3 seconds to activate streaming to accessories.
Example: If you have a TV streamer or extra microphone, press and hold down for 3 seconds to activate.

Move on to Step 5

Step 5 of 7

Program Choices

- All-Around**
The All-Around program is designed to give you optimal sound amplification across the many different situations you encounter throughout your day.
Situation: Your day-to-day routine. This program is activated by default when you turn on your hearing aids.
- Restaurant**
The Restaurant program improves speech clarity and reduces background noise in busy environments. It specifically enhances speech and sounds coming from in front of you, making it easier to follow the conversation at your table.

If you have the Imagine 17, the "Restaurant" program may have a different name:
Ultra Focus Improved one-to-one communication in challenging environments, while keeping you connected to your surroundings.
Situation: Sitting with other people at restaurants, coffee meetups, meetings and appointments.
- Outdoor**
The Outdoor program focuses on wind and noise reduction while still keeping you aware of your surroundings. For example, you remain aware of cars, bikes, and others around you.
Situation: Outdoor walks, cycling, hiking, jogging, or even driving your car
- Music**
The Music program helps to optimize your listening experience by enhancing the details of the lower, middle, and higher notes.
Situation: Listening to any form of recorded or music, as well as singing or performing music yourself.

Move on to Step 6

Step 6 of 7

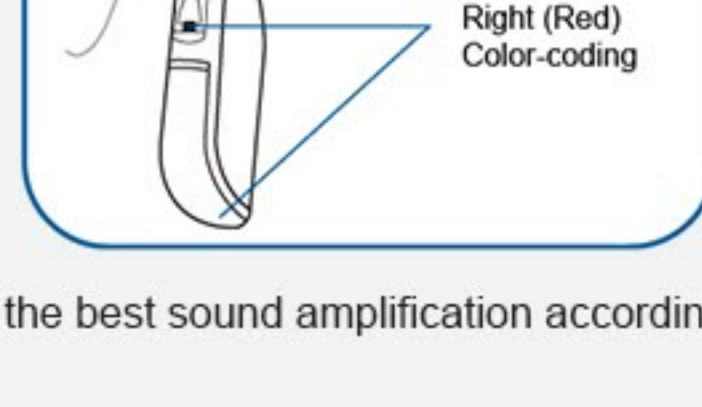
Identifying the Left From the Right

To avoid grabbing the wrong hearing aid by mistake, the left one is marked with a **blue indicator** at the bottom of the hearing aid.

Your right hearing aid is marked with a **red indicator** at the bottom of the hearing aid.

Why is this important?

If you have two hearing aids, they may be tuned differently to give you the best sound amplification according to the specific hearing loss in each ear.

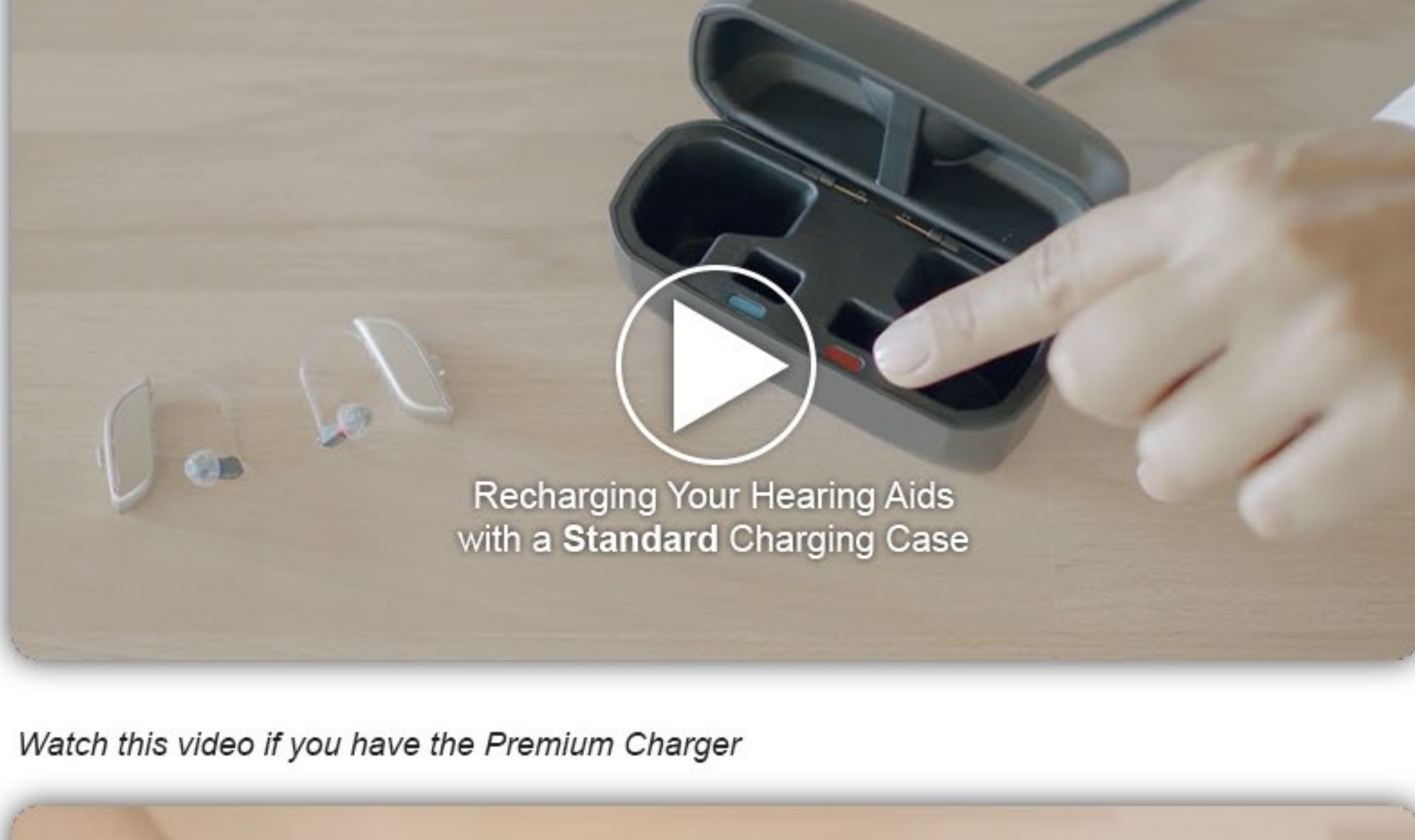


Move on to Step 7

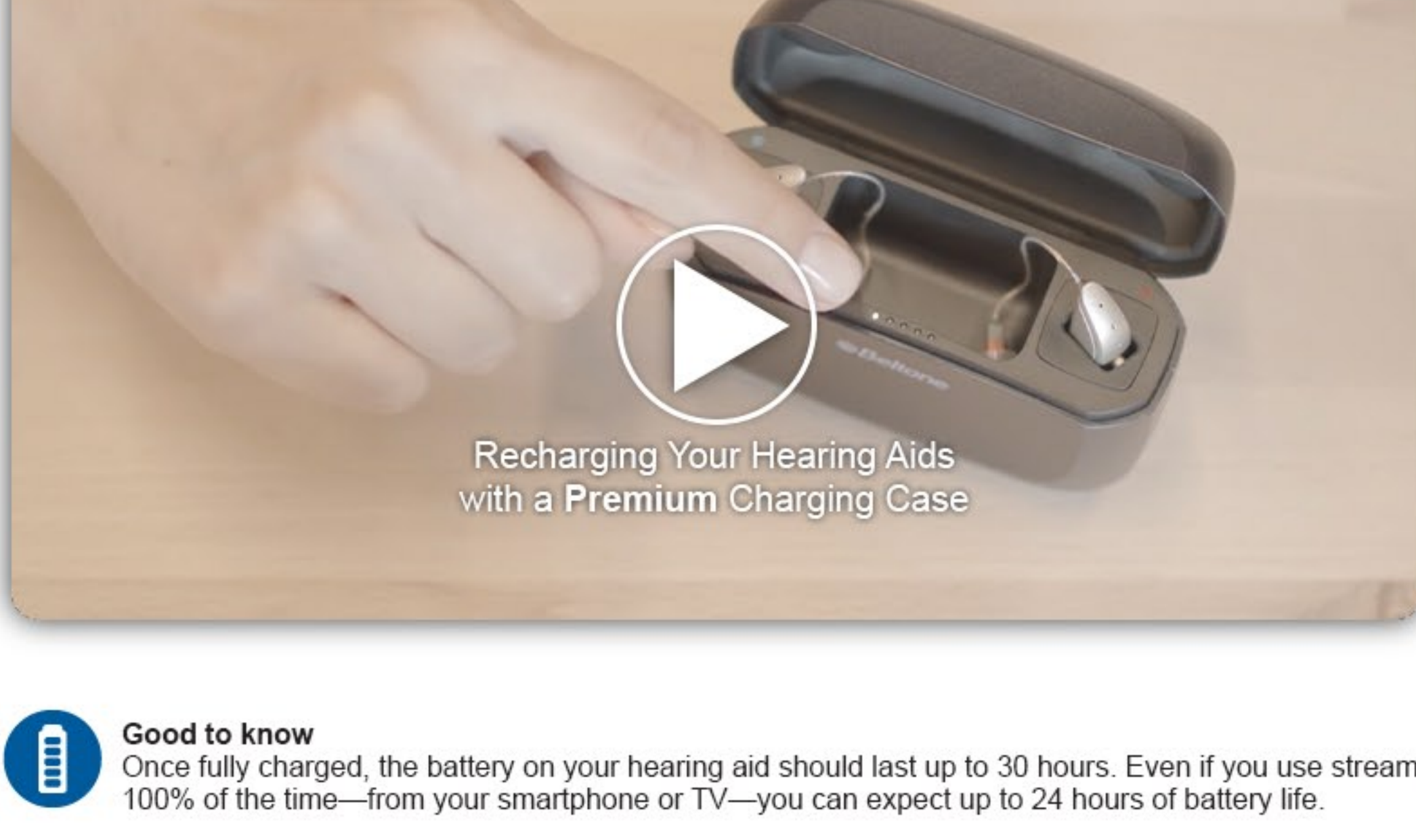
Step 7 of 7

Recharging Your Hearing Aids

Watch this video if you have the Standard Charger



Watch this video if you have the Premium Charger



Good to know

Once fully charged, the battery on your hearing aid should last up to 30 hours. Even if you use streaming 100% of the time—from your smartphone or TV—you can expect up to 24 hours of battery life.

Continue to finish this learning session.

Good Questions for Your Hearing Care Professional

Your Hearing Care Professional may have written down important details about your hearing aid and how it has been configured. If you're not clear on something, here are some good questions to ask:

Which programs are on my hearing aid? What are programs 1, 2 and 3?

How is my push button or multi-function button configured? How do I change programs?